

OKLAHOMA CITY, OKLAHOMA

AL-739 (FAA)

VOR/DME PWA 113.4 Chan 81	APP CRS 348°	Rwy Idg TDZE Apt Elev	6844 1299 1299
---	------------------------	-----------------------------	---

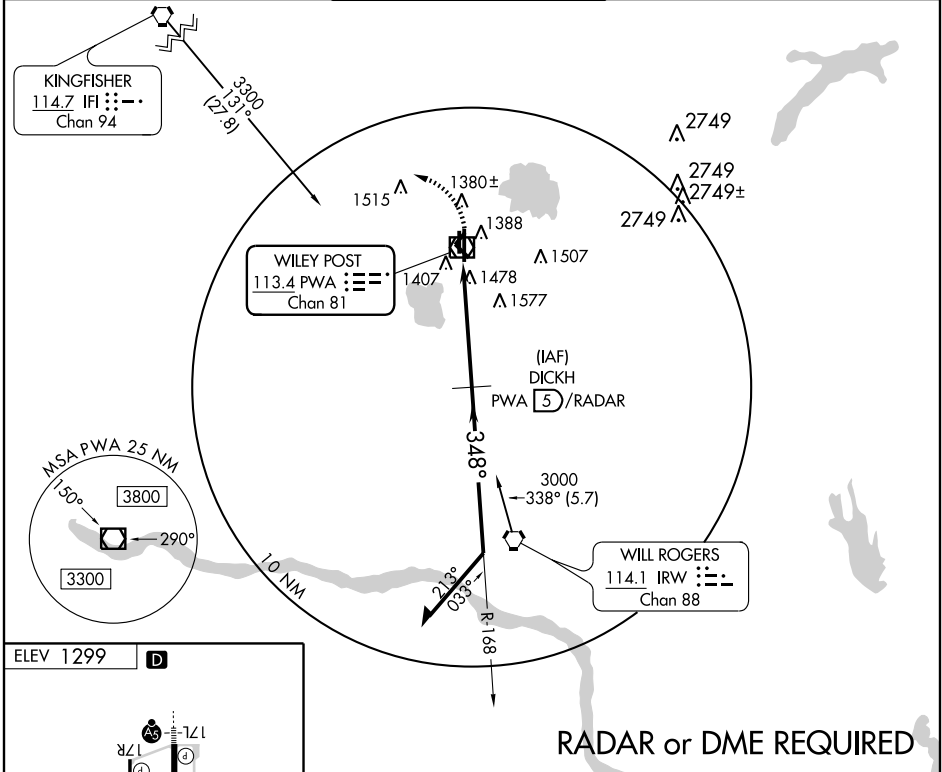
VOR RWY 35R

OKLAHOMA CITY/ WILEY POST (PWA)

ASR

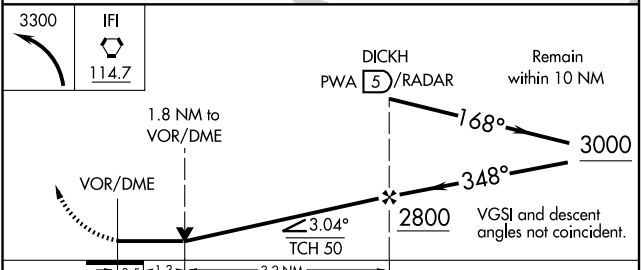
MISSED APPROACH: Climbing left turn to 3300 direct IFI VORTAC.

ATIS 128.725	OKE CITY APP CON 124.6 266.8	WILEY POST TOWER ★ 126.9 (CTAF) 306.9	GND CON 121.7	UNICOM 122.95
------------------------	--	--	-------------------------	-------------------------



SC-1, 06 MAY 2010 to 03 JUN 2010

SC-1, 06 MAY 2010 to 03 JUN 2010



CATEGORY	A	B	C	D
S-35R	1740-1	441 (500-1)	1740-1½ 441 (500-1½)	1740-1½ 441 (500-1½)
CIRCLING	1780-1	481 (500-1)	1780-1½ 481 (500-1½)	1880-2 581 (600-2)

OKLAHOMA CITY, OKLAHOMA
Amdt 3C 09015

35° 32' N-97° 39' W

VOR RWY 35R