

OKLAHOMA CITY, OKLAHOMA

AL-739 (FAA)

# GPS RWY 35R

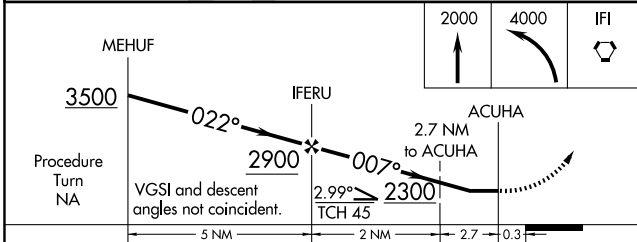
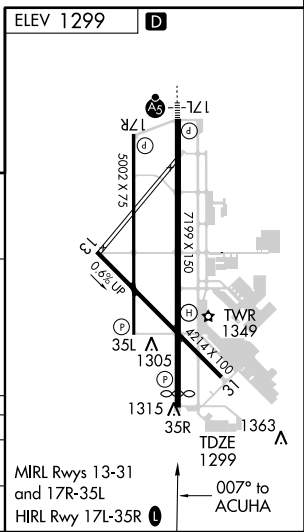
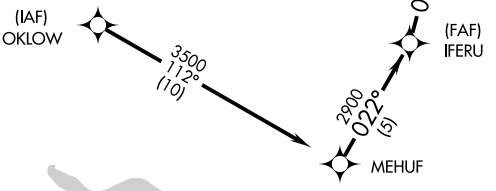
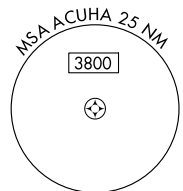
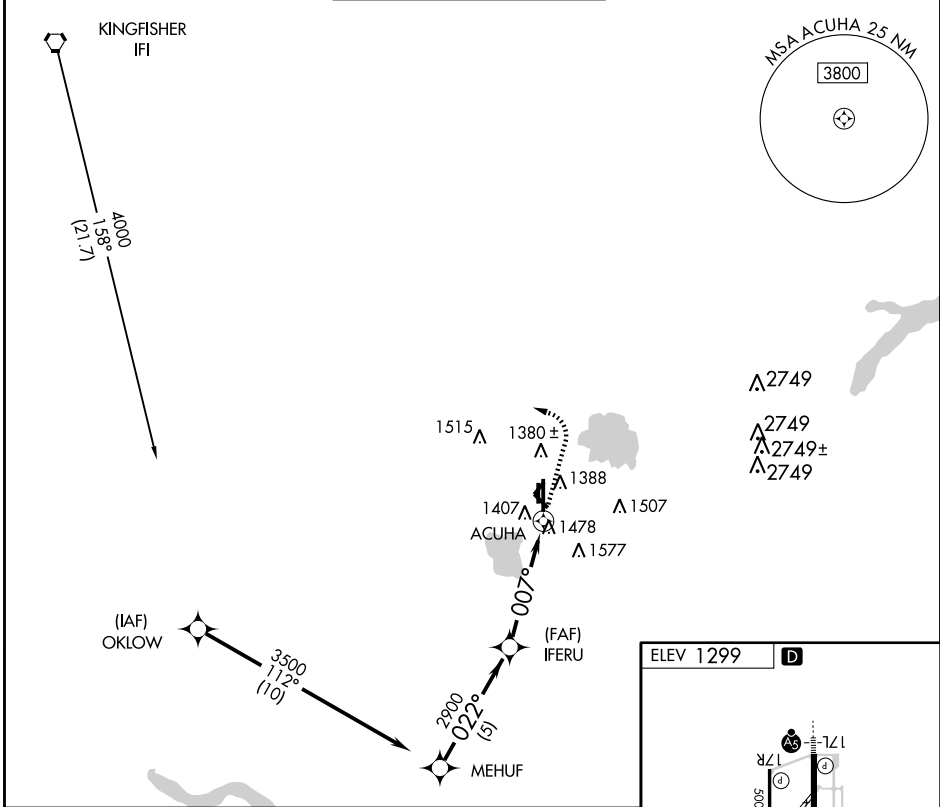
OKLAHOMA CITY/ WILEY POST (PWA)

APP CRS	Rwy Idg	<b>6844</b>
<b>007°</b>	TDZE	<b>1299</b>
	Apt Elev	<b>1299</b>



MISSED APPROACH: Climb to 2000, then climbing left turn to 4000 direct IFI VORTAC.

ATIS	OKE CITY APP CON	WILEY POST TOWER ★	GND CON	UNICOM
<b>128.725</b>	<b>124.6 266.8</b>	<b>126.9</b> (CTAF) <b>0 306.9</b>	<b>121.7</b>	<b>122.95</b>



CATEGORY	A	B	C	D
S-35R	1740-1 441 (500-1)	1740-1½ 441 (500-1½)	1740-1½ 441 (500-1½)	1740-1½ 441 (500-1½)
CIRCLING	1780-1 481 (500-1)	1780-1½ 481 (500-1½)	1780-1½ 481 (500-1½)	1880-2 581 (600-2)

OKLAHOMA CITY, OKLAHOMA  
Orig 09015

35° 32' N-97° 39' W

OKLAHOMA CITY/ WILEY POST (PWA)

# GPS RWY 35R

SC-1, 06 MAY 2010 to 03 JUN 2010

SC-1, 06 MAY 2010 to 03 JUN 2010