

DENTON, TEXAS

AL-5866 (FAA)

10098

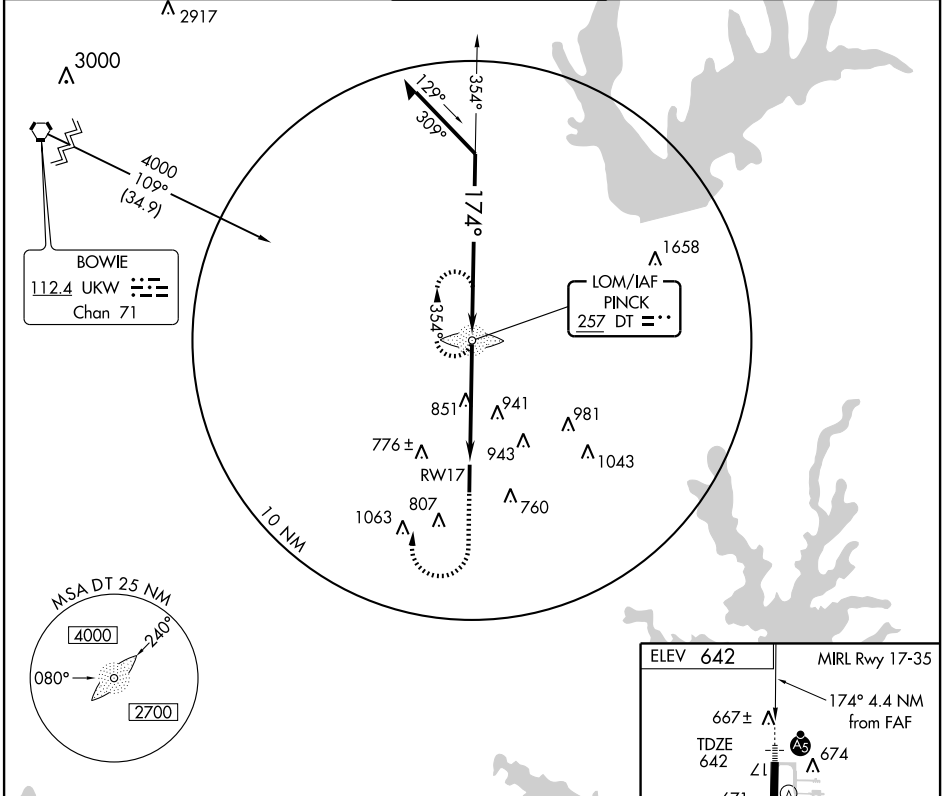
LOM DT 257	APP CRS 174°	Rwy Idg TDZE Apt Elev	5999 642 642
----------------------	------------------------	-----------------------------	---

NDB or GPS RWY 17

DENTON MUNI (D'TO)

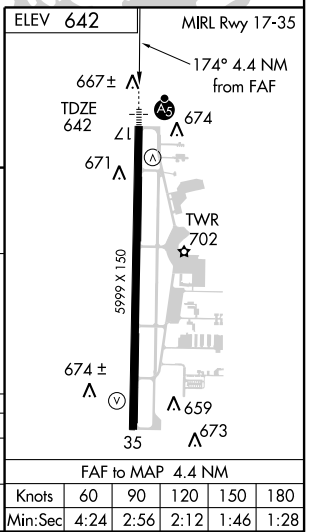
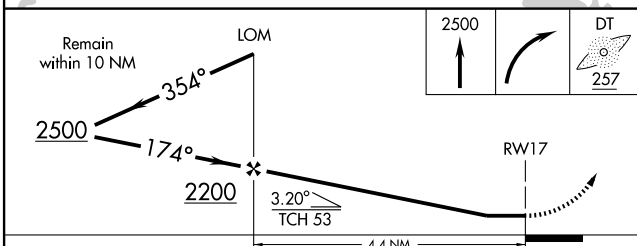
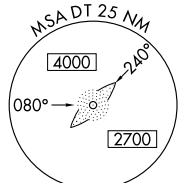
			MISSED APPROACH: Climb to 2500, then right turn direct DT LOM and hold.	
--	--	--	---	--

ASOS 119.325	REGIONAL APP CON 118.1 306.95	DENTON TOWER★ 119.95 (CTAF)	GND CON 123.95	CLNC DEL 123.95
------------------------	---	---------------------------------------	--------------------------	---------------------------



SC-2, 06 MAY 2010 to 03 JUN 2010

SC-2, 06 MAY 2010 to 03 JUN 2010



CATEGORY	A	B	C	D
S-17	1260-3/4 618 (700-3/4)		1260-1 1/4 618 (700-1 1/4)	1260-1 3/4 618 (700-1 3/4)
CIRCLING	1260-1 618 (700-1)		1260-1 3/4 618 (700-1 3/4)	1260-2 618 (700-2)

FAF to MAP 4.4 NM					
Knots	60	90	120	150	180
Min:Sec	4:24	2:56	2:12	1:46	1:28

DENTON, TEXAS
Amdt 6D 17DEC09

33°12'N - 97°12' W

DENTON MUNI (D'TO)

NDB or GPS RWY 17