

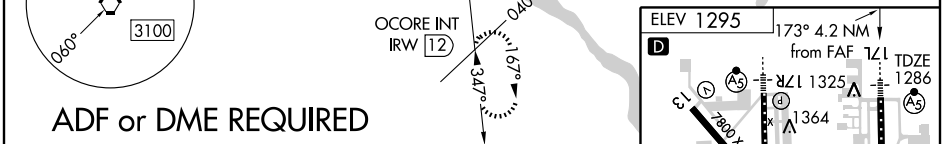
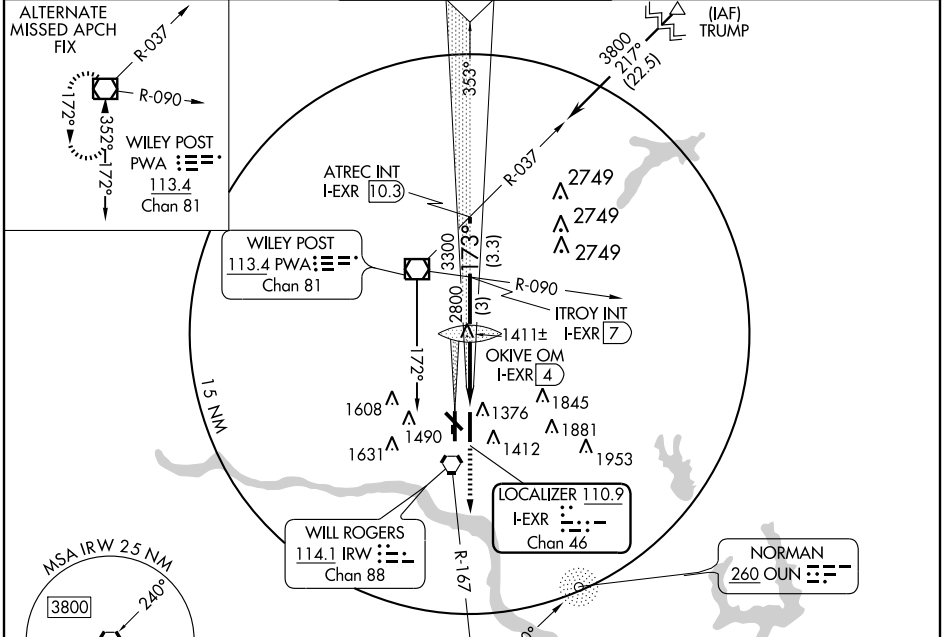
ILS or LOC RWY 17L

OKLAHOMA CITY/WILL ROGERS WORLD (OKC)

LOC I-EXR 110.9 Chan 46	APP CRS 173°	Rwy Idg TDZE Apt Elev	9802 1286 1295
--------------------------------------	------------------------	-----------------------------	---

<p>For inoperative MALSRS, increase S-ILS 17L Cat E visibility to RVR 4000. For inoperative MALSRS, increase S-LOC 17L Cat E visibility to 1½.</p>	<p>MALSRS</p>	<p>MISSED APPROACH: Climb to 4000 via heading 173° and IRW VORTAC R-167 to OCORE Int/IRW 12 DME and hold.</p>

ATIS 125.85	OKE CITY APP CON 124.6 266.8	ROGERS TOWER 119.35 269.45	GND CON 121.9 348.6	CLNC DEL 124.35
-----------------------	--	--------------------------------------	-------------------------------	---------------------------



<p>GS 3.00° TCH 59</p>	ATREC INT I-EXR 10.3	ITROY INT I-EXR 7	OKIVE OM I-EXR 4	4000 ↑ HDG 173°	IRW R-167 114.1	OCORE IRW 12
	3800	3300	2800	2704		
CATEGORY	A	B	C	D	E	
S-ILS 17L	1486/24		200 (200-½)			
S-LOC 17L	1680/24	394 (400-½)		1680/40 394 (400-¾)	1680/50 394 (400-1)	
CIRCLING	1740-1 445 (500-1)	1760-1 465 (500-1)	1760-1½ 465 (500-1½)	1860-2 565 (600-2)	2240-3 945 (1000-3)	
						<p>TDZ/CL Rwy 35R</p> <p>REIL Rwys 13 and 31</p> <p>MIRL Rwy 13-31</p> <p>HIRL Rwys 17L-35R and 17R-35L</p> <p>FAF to MAP 4.2 NM</p>
	Knots	60	90	120	150	180
	Min:Sec	4:12	2:48	2:06	1:41	1:24

SC-1, 03 JUN 2010 to 01 JUL 2010

SC-1, 03 JUN 2010 to 01 JUL 2010