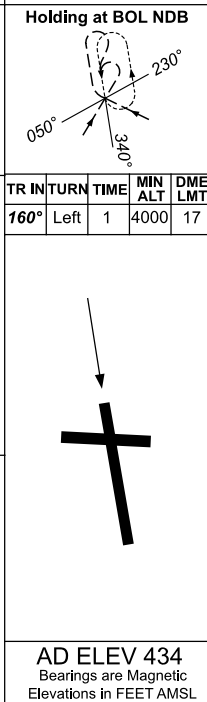
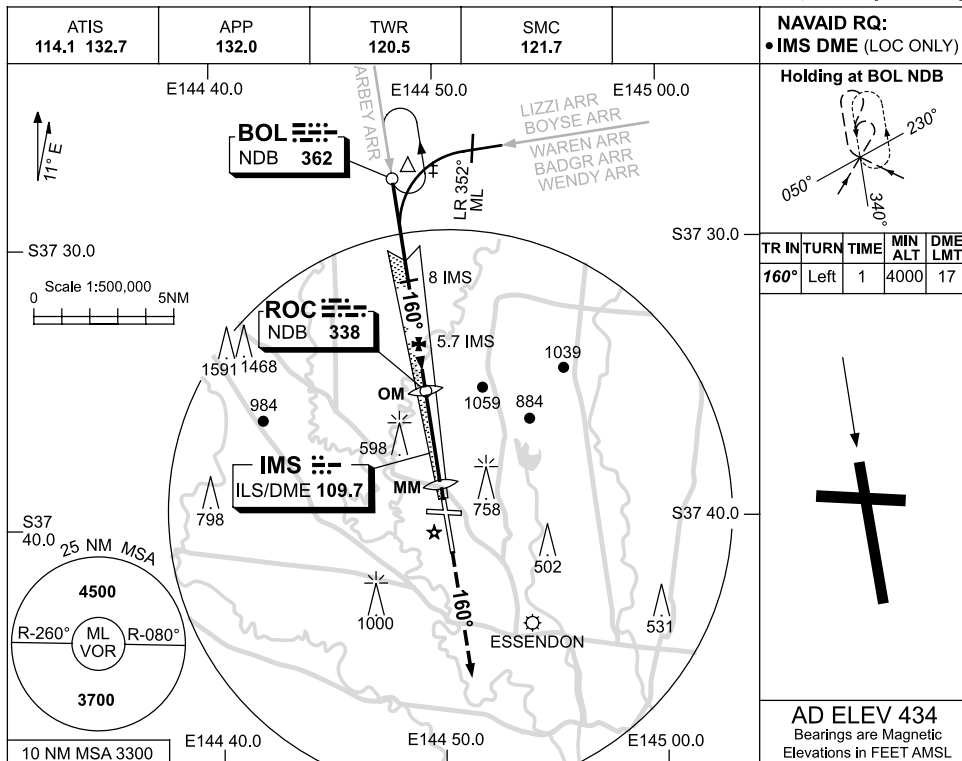


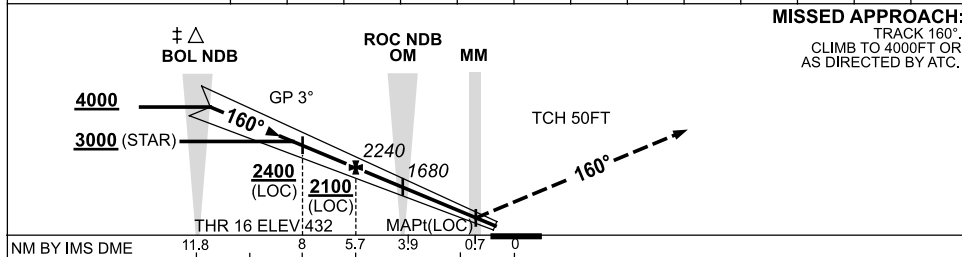
USE QNH

ILS-Z or LOC-Z RWY 16
MELBOURNE, VIC (YMML)

19 NOV 2009



DME DIST	11.2	10	9	8.1	7	5.7	5	3.9	3	2.3			
ALT (3° APCH PATH)	4000	3600	3280	3000	2650	2240	2010	1680	1370	1140			



NOTES

- * 1. SPECIAL ALT MNM 700/2.5 KM. (NOT APPLICABLE TO LOC/DME).
- ‡ 2. ACFT MAY BE RADAR VECTORED TO FNA OR JOIN PROCEDURE OFF STAR PRIOR TO FAF.

CATEGORY	A	B	C	D
S-I ILS		640 (208) 0.8	550 RVR	
S-I LOC/DME		1140 (706-3.0)		
CIRCLING	1140 (706-2.4)		1450 (1016-4.0)	1600 (1166-5.0)
ALTERNATE ‡	(1206-4.4)		(1516-6.0)	(1666-7.0)

Changes: DIST/ALT SCALE, NOTES 2, Editorial.

MMLII03-121

