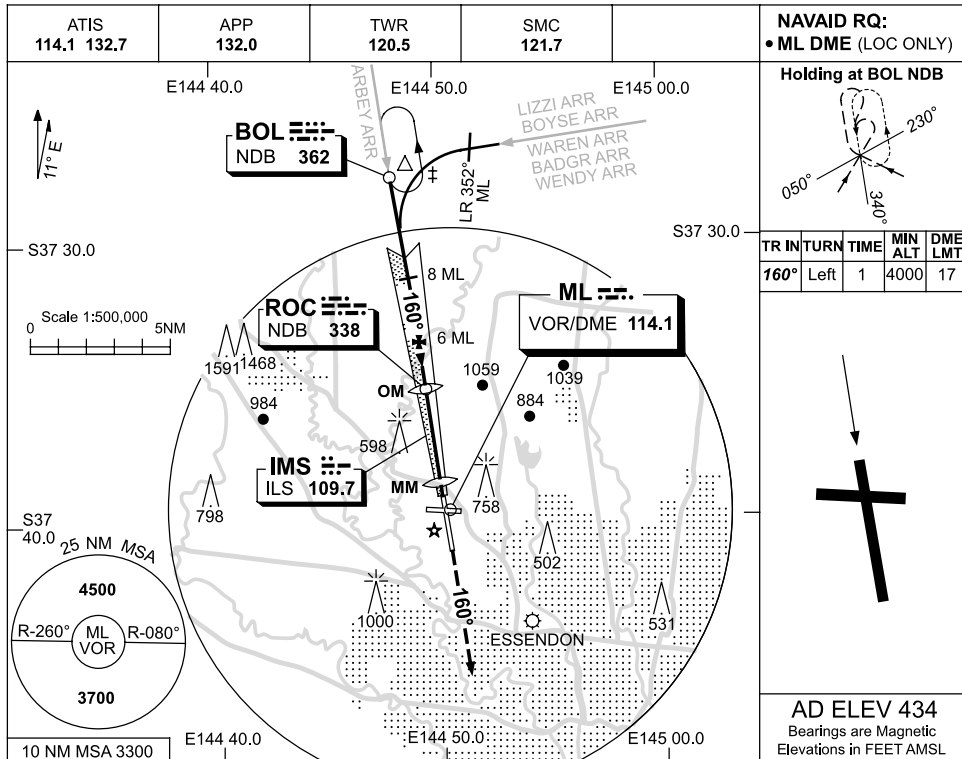


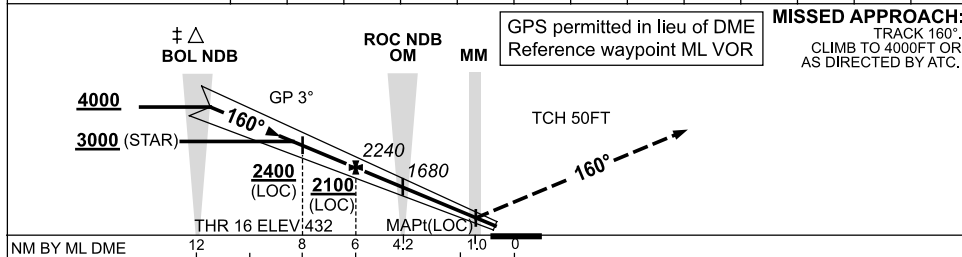
USE QNH

ILS-Y or LOC-Y RWY 16
MELBOURNE, VIC (YMML)

19 NOV 2009



DME DIST	11.5	11	10	9	8.4	8	7	6	5	4.2	3	2.5	
ALT (3° APCH PATH)	4000	3840	3520	3200	3000	2880	2560	2240	1920	1680	1290	1140	



NOTES

- * 1. SPECIAL ALT MNM 700/2.5 KM. (NOT APPLICABLE TO LOC/DME).
- ‡ 2. ACFT MAY BE RADAR VECTORED TO FNA OR JOIN PROCEDURE OFF STAR PRIOR TO FAF.

CATEGORY	A	B	C	D
S-I ILS		640 (208) 0.8	550 RVR	
S-I LOC/DME		1140 (706-3.0)		
CIRCLING	1140 (706-2.4)		1450 (1016-4.0)	1600 (1166-5.0)
ALTERNATE ‡	(1206-4.4)		(1516-6.0)	(1666-7.0)

Changes: DIST/ALT SCALE, Editorial.

MMLII01-121

