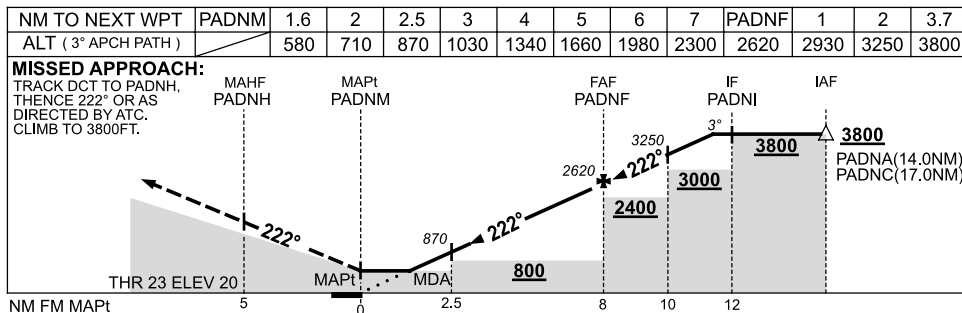
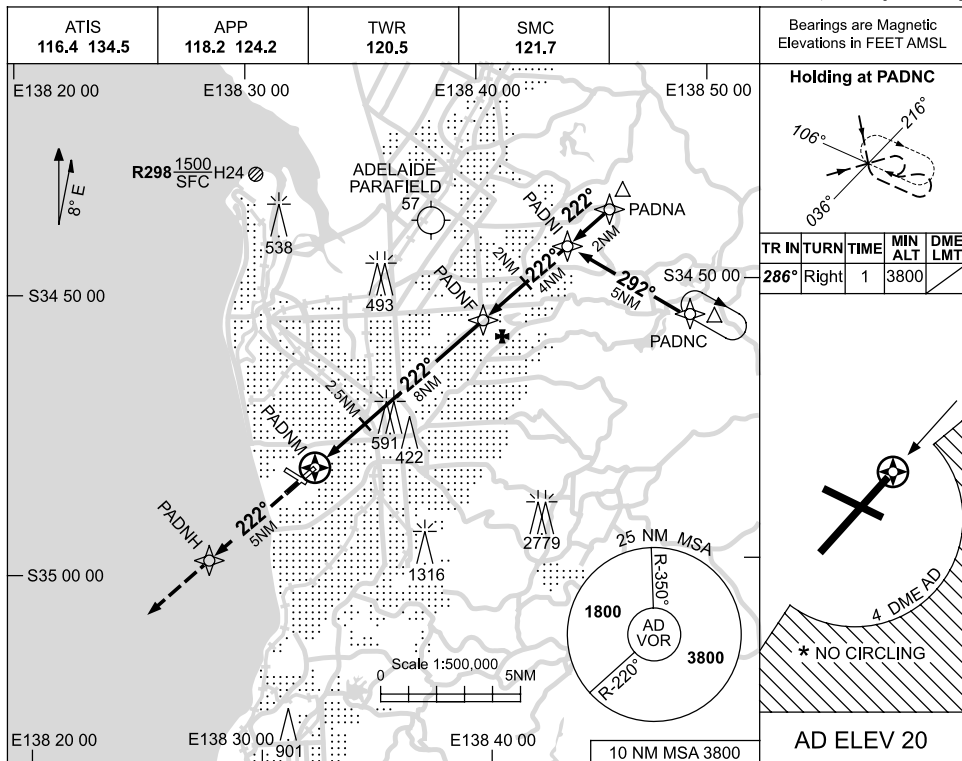


USE QNH

RNAV-Z (GNSS) RWY 23
ADELAIDE, SA (YPAD)

11 MAR 2010



NOTES

CATEGORY	A	B	C	D
S-I GNSS	580 (560-3.2)			
CIRCLING *	900 (880-2.4)	1000 (980-4.0)	1000 (980-5.0)	
ALTERNATE	(1380-4.4)	(1480-6.0)	(1480-7.0)	

- 1. MAX IAS:
INITIAL : 210KT.
- * 2. NO CIRCLING S OF
RWY 05/23 BEYOND
4 DME AD.

Changes: CO-ORD FORMAT.

PADGN02-122