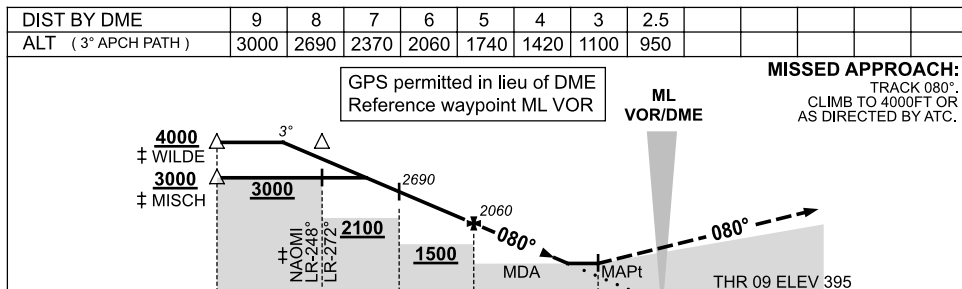
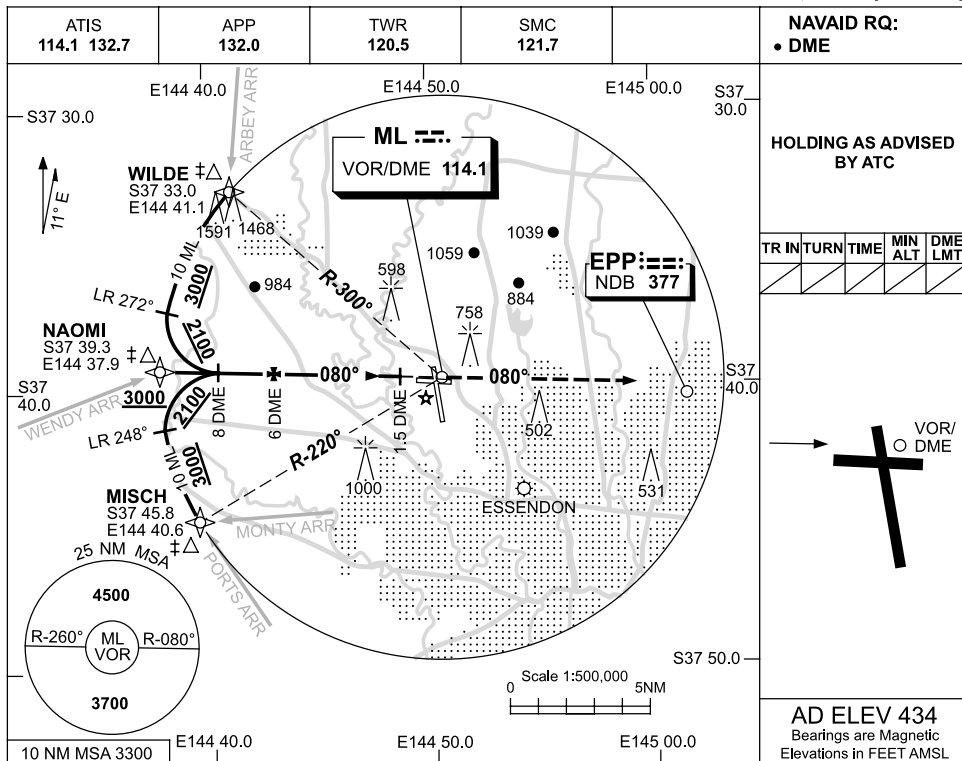


USE QNH

VOR RWY 09

MELBOURNE, VIC (YMML)

19 NOV 2009



CATEGORY	A	B	C	D
S-I VOR/DME	<b>950 (555-3.2)</b>			
CIRCLING	<b>1140 (706-2.4)</b>	<b>1450 (1016-4.0)</b>	<b>1600 (1166-5.0)</b>	
ALTERNATE ‡	(1206-4.4)	(1516-6.0)	(1666-7.0)	

\* 1. SPECIAL ALT MNM NOT APPLICABLE.

‡ 2. ACFT MAY BE RADAR VECTORED TO IAF.

Changes: WILDE START ALT, DIST/ALT SCALE, MISSED APCH, Editorial.

MMLVO01-121