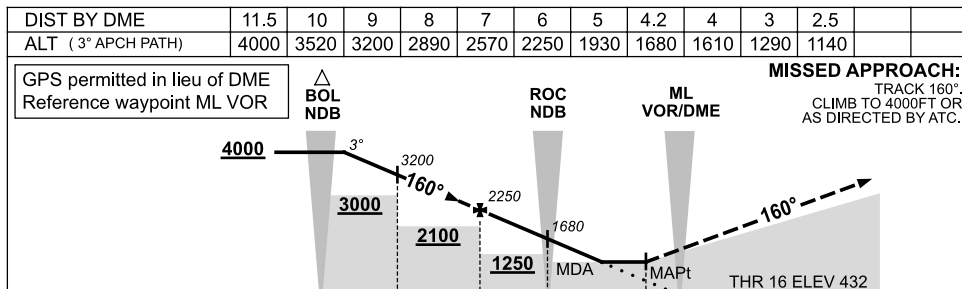
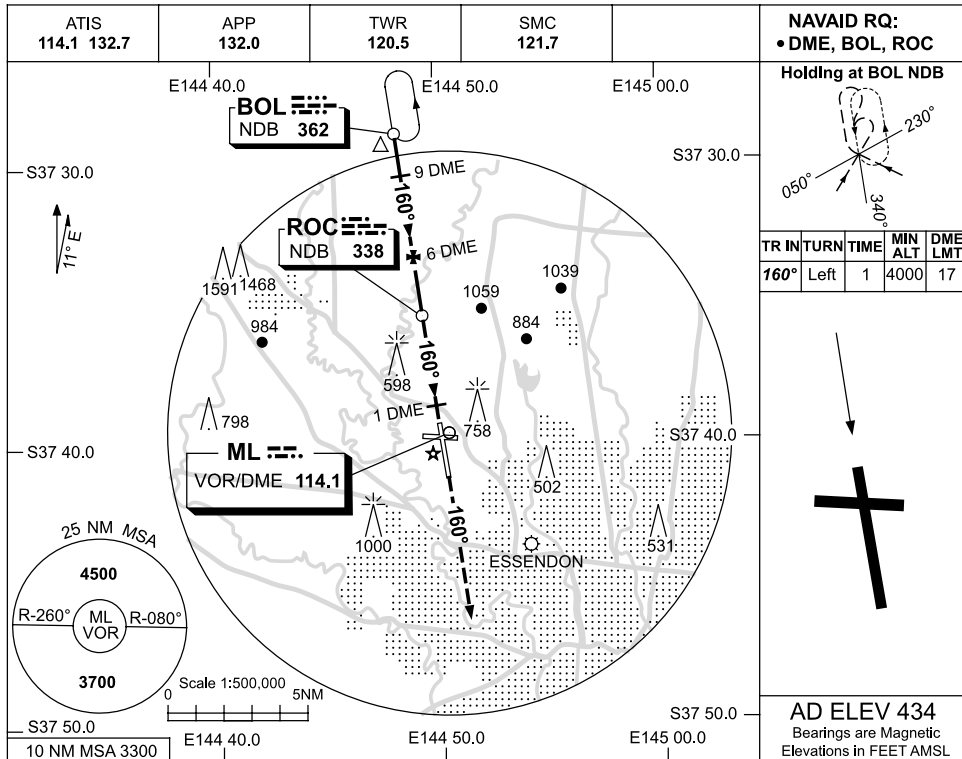


USE QNH

NDB RWY 16
MELBOURNE, VIC (YMML)

19 NOV 2009



NOTES

BOTH NDB RQ FOR PROC.

CATEGORY	A	B	C	D
S-I NDB/DME	1140 (706-4.0)			
CIRCLING	1140 (706-2.4)		1450 (1016-4.0)	1600 (1166-5.0)
ALTERNATE	(1206-4.4)		(1516-6.0)	(1666-7.0)

Changes: Editorial.

MMLLO01-121