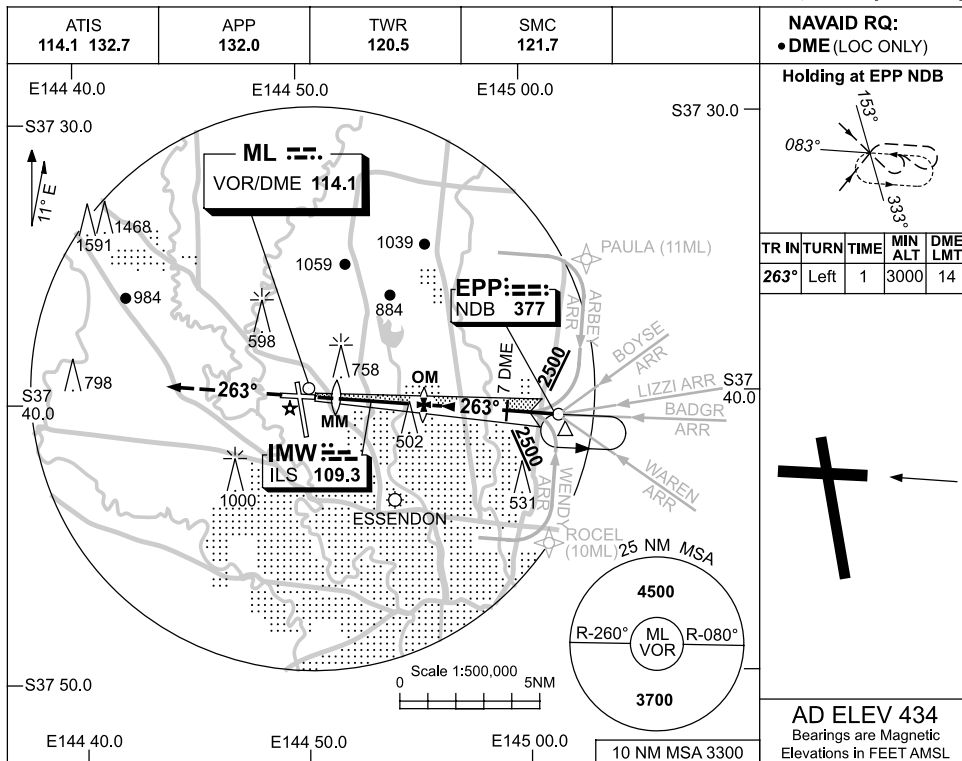


USE QNH

ILS or LOC RWY 27
MELBOURNE, VIC (YMML)

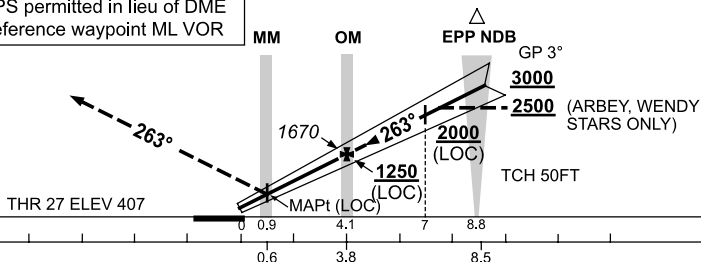
19 NOV 2009



DME DIST	3	4.1	5	6	7	8.3							
ALT (3° APCH PATH)	1320	1670	1960	2280	2600	3000							

MISSED APPROACH:
TRACK 263°.
CLIMB TO 4000FT OR
AS DIRECTED BY ATC.

GPS permitted in lieu of DME
Reference waypoint ML VOR



NOTES

1. SPECIAL ALTN MNM
700/2.5 KM.

CATEGORY	A	B	C	D
S-I ILS		610 (203)	0.8	550 RVR
S-I LOC/DME		880 (473-1.7)		
CIRCLING	1140 (706-2.4)		1450 (1016-4.0)	1600 (1166-5.0)
ALTERNATE *	(1206-4.4)		(1516-6.0)	(1666-7.0)

Changes: DIST/ALT SCALE, Editorial.

MMLII02-121